

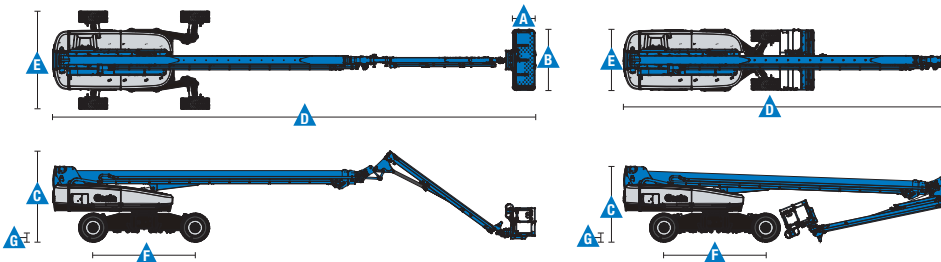
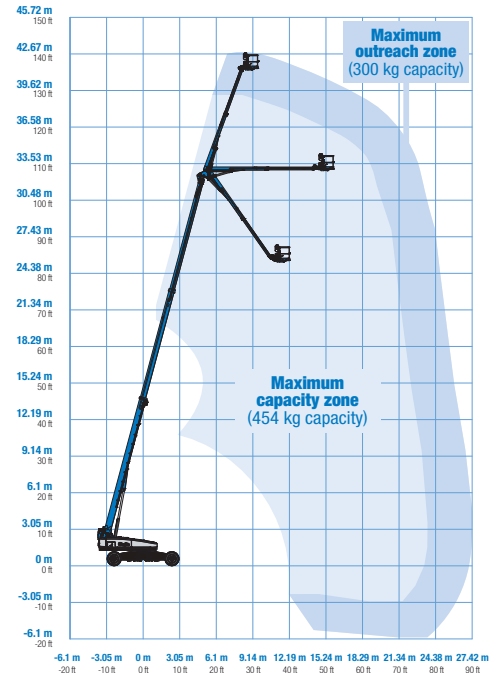
Specifications

| Model | SX-135 XC | |
|---|--|-------------------|
| Measurements | Metric | US |
| Working height maximum* | 43.15 m | 141 ft |
| Platform height maximum | 41.15 m | 135 ft |
| Horizontal reach maximum | 27.43 m | 90 ft |
| Below ground reach | 6.00 m | 19 ft 8 in |
| A Platform length | 0.91 m | 3 ft |
| B Platform width | 2.44 m | 8 ft |
| C Height - stowed | 3.05 m | 10 ft |
| D Length - stowed | 19.76 m | 64 ft 10 in |
| Length - transport (jib tucked under) | 13.28 m | 43 ft 7 in |
| E Width - axles retracted | 2.49 m | 8 ft 2 in |
| Width - axles extended | 3.94 m | 12 ft 11 in |
| A Wheelbase - axles retracted | 4.11 m | 13 ft 6 in |
| Wheelbase - axles extended | 4.11 m | 13 ft 6 in |
| G Ground clearance - center | 0.38 m | 1 ft 3 in |
| Productivity | | |
| Lift capacity | 300 kg / 454 kg | 660 lb / 1,000 lb |
| Platform rotation | 160° | 160° |
| Vertical jib rotation - up/down | 70° / 55° | 70° / 55° |
| Turntable rotation | 360° continuous | |
| Turntable tailswing - axle retracted | 1.14 m | 3 ft 9 in |
| Turntable tailswing - axle extended | 1.70 m | 5 ft 7 in |
| Drive speed - stowed | 4.3 km/h | 2.7 mph |
| Drive speed - out of stowed | 0.65 km/h | 0.4 mph |
| Gradeability - stowed** | 35% | 35% |
| Turning radius - axle retracted: inside | 8.03 m | 26 ft 4 in |
| outside | 9.96 m | 32 ft 8 in |
| Turning radius - axle extended: inside | 2.90 m | 9 ft 6 in |
| outside | 6.17 m | 20 ft 3 in |
| Controls | 12 V DC proportional | |
| Tyres | 445D50/710HD | |
| Power | | |
| Power source | Deutz TD2.9 L4, 74 hp (55 kW), Stage IIIB, water cooled Deutz TD2011L04i, 74 hp (55 kW), Stage IIIA, air cooled | |
| Auxiliary power unit | 12 V DC | 12 V DC |
| Hydraulic tank capacity | 227 L | 60 gal |
| Fuel tank capacity | 151 L | 40 gal |
| Weight*** | | |
| 4WD | 21,546 kg | 47,500 lb |

Standards Compliance

EU Directives: 2006/42/EC - Machinery Directive
Harmonized Standards: EN280;
2014/30/EU (EMC); 2000/14/EC (Outdoor Noise)

Range Of Motion SX-135 XC



* The metric equivalent of working height adds 2 m to platform height. U.S. adds 6 ft to platform height.

** Gradeability applies to driving on slopes. See operator's manual for details regarding slope ratings.

*** Weight will vary depending on options and/or country standards.

Features

| Standard Features | Easily Configured To Meet Your Needs | Options & Accessories |
|-------------------|--------------------------------------|-----------------------|
|-------------------|--------------------------------------|-----------------------|

Measurements

SX-135 XC

- 43.15 m (141 ft) working height
- 27.43 m (90 ft) horizontal reach
- 300 kg (660 lb) unrestricted and 454 kg (1,000 lb) restricted lift capacity

Productivity

- Self-leveling platform
- 160° Hydraulic platform rotation
- Proportional joystick controls
- Hydraulic oil cooler
- Thumb rocker steering
- Drive enable
- Chassis tilt drive function cut-out
- AC power to platform
- Horn
- Hour meter
- Tilt alarm
- Descent alarm
- Alarm package
- 360° continuous turntable rotation
- Positive traction 4WD
- Two speed wheel motors
- Four wheel high angle steer
- Four steering modes: front, rear, crab and coordinated
- On board full diagnostics and engine monitoring display
- Ground control box cover
- Telematics-Ready Connector
- Hydraulic oil cooler
- Lift Guard™ Contact Alarm

Power

- All engines are emissions compliant
- 12 V DC auxiliary power
- Anti-restart engine protection
- Auto engine fault shutdown
- Intake air heater
- Engine gauge display

Platform Options

- Steel 1.83 m (6 ft) dual-entry platform with side swing gate
- Steel 2.44 (8 ft) tri-entry platform with side swing gate (standard)

Jib

- 5.48 m (18 ft) to 9.14 m (30 ft) Telescoping Jib-Extend™

Engine Options

- Deutz Stage IIIB turbo diesel 74 hp (55 kW)
- Deutz Stage IIIA turbo diesel 74 hp (55 kW)

Drive/Steer

- 4 x 4 (standard)
- 4 wheel steer (standard)

Axles

- Mini X-chassis™ extendable axles (standard)

Tyres

- Rough terrain foam-filled (standard)



Productivity Options

- Half-mesh platform inserts
- Platform auxiliary top rail
- Hostile environment package⁽¹⁾
- Dual axis joystick steering
- Work lights package (2 platform mounted work lights)⁽¹⁾
- Biodegradable Hydraulic Oil
- Airline to Platform⁽¹⁾
- Aircraft Protection Kit ^(1,4): platform foam padding and padded disable system
- Chassis tilt lift function cut-out
- Lockable platform control box cover
- Track & Trace⁽²⁾ (GPS unit providing machine location & operating information)
- Operator Protective Structure ⁽³⁾

Power Options

- AC generator packages (110V/60Hz, 110V/50Hz, 240V/50Hz) 3000W, hydraulically driven
- Cold Weather Package⁽¹⁾
- Diesel scrubber/spark arrestor muffler (catalytic muffler), Stage IIIA engine only
- Intake air pre-cleaner

⁽¹⁾ Factory-fit option only

⁽²⁾ Includes a first 2 years subscription

⁽³⁾ Aftermarket only

⁽⁴⁾ Requires 1.83 m (6 ft) platform, not available with any other platform, nor platform option

United Kingdom and MESART

The Maltings, Wharf Road, Grantham NG31 6BH, T: +44 800 988 3739 (toll free), Fax +44 (0)1476 584334, Email AWP-InfoEurope@terex.com
Middle East, Southern Africa, Russia and Turkey, T: +971 4 399 0381, Email AWP-InfoME@terex.com
Visit www.genielift.com/en-gb/about-genie/locations to view our global locations list.

Worldwide Manufacturing And Distribution

Australia · Brazil · Caribbean · Central America · China · France · Germany · Italy · Japan · Korea · Mexico · Russia · Southeast Asia · Spain · Sweden · United Arab Emirates · United Kingdom · United States

Product specifications and prices are subject to change without notice or obligation. The photographs and/or drawings in this document are for illustrative purposes only. Refer to the appropriate Operator's Manual for instructions on the proper use of this equipment. Failure to follow the appropriate Operator's Manual when using our equipment or to otherwise act irresponsibly may result in serious injury or death. The only warranty applicable to our equipment is the standard written warranty applicable to the particular product and sale and we make no other warranty, express or implied. Products and services listed may be trademarks, service marks or trade names of Terex Corporation and/or their subsidiaries in the USA and many other countries. Genie is a registered trademark of Terex South Dakota, Inc. © 2019 Terex Corporation.

