

Outstanding Reach

GENIE BOOMS



Customers First Always

Partnering for Success

Our dedication to lifting you higher extends well beyond the physical reach of our products. We thrive on building satisfying customer relationships. Because you, our customer, are at the center of everything we do.

Since 1966, we've been developing products to solve your worksite challenges — and that process never ends. Our team of product managers and engineers use your input to design new products, featuring the latest technology to meet your changing needs. Then we manufacture those products to stringent standards that help increase quality, lower costs and give you exceptional value for years to come.

Providing Superior Value

Our commitment doesn't end with the sale. Our dedicated service teams provide support when you need it most. Our extensive parts network ships most parts within 24 hours. Simply put, we're always working to help increase your "up time" so you can be more successful.

Genie is driven by one goal: doing the right thing, at the right time for our customers. That's not just what we do; it's who we are. So tell us what you need. We're listening.



Reach and Performance for Every Job

Get the reach and reliable performance you need to get the job done from the ever-growing line of Genie® articulating and telescopic boom lifts. Electric, hybrid, bi-energy or engine-powered — for indoor, outdoor or rough terrain applications — there's a Genie lift for every job.

Genie articulating Z®-booms provide the ultimate in versatility with up, out and over positioning capabilities for hard-to-access work areas. Genie telescopic S®-booms are engineered to enhance working efficiency and offer greater horizontal outreach than any other type of aerial platform. And all of our booms can be customized with a variety of options and packages to fit your individual job site needs.

Genie XC™ (Xtra Capacity™) telescopic boom lifts are engineered to work in more applications that require higher capacities. With industry-leading dual lift capacity and a smooth operating envelope, these XC boom lifts are a perfect fit for heavy lifting in the construction and maintenance of stadium and sports arenas, gas and oil refineries, industrial and telecommunications applications.

Setting the Standard: Terex Aerial Work Platforms (AWP) manufactures some of the most advanced, highest-valued lift equipment in the industry. Distinctive blue Genie® lifts set the standard for performance and durability — not to mention support from people who understand your business.

Genie revolutionized the industry with the first articulating boom and remains a world leader in lifts.

Narrow Access Solutions

Drive through standard doorways, work close to buildings or around obstacles, and access overhead work from aisles and other congested areas. It's all possible with Genie® narrow electric lifts. From tight turning to a rotating platform, they're designed with features that make it easy to manoeuvre precisely where you need to work. Working heights range from 10.89 m (35 ft 2 in) to 14.32 m (46 ft 5 in).



Exceptional Control

Proportional lift and drive controls allow precise positioning of the boom and smooth drive performance. For added flexibility, the energy-saving Z®-40/23N control system allows efficient operation of multiple functions at the same time — which allows you to get where you need to go faster.



Tight Access Manoeuvrability

The electric boom line includes a variety of narrow models ideal for the tightest, most confined work areas. These compact designs feature a tight turning radius with zero tailswing on most models for easy manoeuvring through narrow aisles and standard doors.

Precise Positioning

The self-levelling platform rotates 90° to either side, while the jib boom moves 130° to 139° vertically, depending on the model. The 1.22 m (4 ft) jib moves horizontally 180° on rotating jib (RJ) models for extra working range. Proportional controls allow you to control the speed of each function and make smooth, precise adjustments in tight areas.



Reliable Electric Drive Systems

Several models feature a 48V DC electric drive system, which can be freely used in areas where quiet, emission-free operation is important. The Z®-40/23N models are the first in the industry to feature the AC drive system, which combines DC batteries with 3-phase AC drive motors for quiet, more energy efficient operation and longer battery life. This advanced system yields better drive speed and gradeability, and the drive wheels work independently for excellent traction control.



Genie was the first in the industry to introduce the rotating jib. The Genie Z-40/23N models are also the first in the industry to feature the efficient AC drive system.

Narrow Models Available

Z-30/20N | Z-30/20N RJ | Z-34/22N | Z-40/23N | Z-40/23N RJ

Lightweight and Electric High Efficiency

The Genie® Z[®]-33/18 articulated boom lift is an excellent combination of lightweight, compact dimensions and up-and-over lift capabilities whilst combined with powerful drive motors. Designed for use on both indoor sensitive floors as well as capable of meeting general outdoor maintenance tasks the Z-33/18 is easy to use where space is restricted. The new generation of versatile and lightweight boom includes features that will increase operator efficiency and help optimize customers' fleet.



High Performance in a Small Package

Featuring a compact 1.9 m (6.3 ft) wheelbase providing a gradeability of 30 percent, the Genie Z-33/18 articulating boom lift offers a working height of 12 m (39.4 ft), a horizontal reach of 5.57 m (18.3 ft) and an up-and-over clearance of 4.28 m (14 ft). In addition to a 76 cm (2.6 ft) long x 1.16 m (3.1 ft) wide platform, the aluminum man-basket supports weights of up to 200 kg (440 lbs).

To make transport easier, this compact unit's boom stows down to only 1.50 m in width (4.11 ft) and 4.17 m (13.5 ft) in length. Drive speed is an efficient 6.0 km/hr (4.0 mph) combined with a 48V DC 315 Ah battery power source.

Simple to Operate

Proportional joystick with thumb rocker steer offers easy, smooth controls and several boom movements at a time for quicker operation. The 400° turntable rotation allows precise positioning without having to move the machine.

Genie® Fast Mast™ System

The Genie® Fast Mast™ System enables the boom to be moved from full height to ground level, and from ground level to full height with the secondary boom fully raised.



Lightweight

Built in Europe to suit the needs of European customers, this versatile articulating Genie boom lift model weighs only 3,640 kg (8,025 lbs) and offers a ground clearance of 15 cm (6 in). Particularly well-suited to applications on sensitive surfaces inside airports, shopping centres and theatres - in addition to routine outdoor maintenance tasks, the Z-33/18 lift includes features to help increase efficiency on jobsites where space is tight. Its key features include solid or multi-surface non-marking tyres, an efficient AC drive transmission powered by 315 Ah deep cycle batteries, a tight inside turning radius with 15.2 cm (6 in) tailswing for excellent manoeuvrability and the ability to drive at maximum height.

AC Drive

For industrial applications where the machine is used intensively throughout the day and driven significant distances, the efficient Genie® AC drive system gives you the power to get where you need quickly and easily.



Maintenance Faster and Easier

Genie is known for designing its products with serviceability in mind, and this product is no different. In addition to easily accessible machine components, the Genie Z-33/18 boom lift features proximity switches that are conveniently protected within the boom to avoid damage. Thanks to common controllers used across the entire Genie boom lift family, technicians will also be able to apply their existing knowledge of Genie equipment to help make troubleshooting and maintenance faster and easier.

Electric High Performance Models Available

Z-33/18

DC, Hybrid & Bi-Energy Power Options for Demanding Jobs

Our efficient DC, Hybrid & Bi-Energy machines offer quiet, low emission operation in the most sensitive work environments. For industrial applications where the machine must be driven significant distances, the Genie® hybrid and bi-energy system combine the benefits of a 48V DC machine with the versatility of a diesel-powered generator. These units handle challenging jobs all day long, giving you the power to get where you need to go quickly and easily with soft-riding pneumatic tyres, excellent manoeuvrability and limited tailswing. Non-marking air- and foam-filled tyre options also make these models great for industrial applications. Working heights range from 12.52 m (40 ft 6 in) to 20.16 m (65 ft 7 in).

Highly Efficient and Versatile Hybrid System

The Z® -60/37 FE is two machines in one. The 'full electric' mode offers a full-day, emission-free run time on a single charge. The 'hybrid' mode offers one week of run time with a single tank of diesel. The ideal, environmentally-friendly solution for increased return on investment and a lower cost of operation.



Multiple power options meet the demands of a variety of indoor and outdoor applications.



Power When You Need It

Lift, manoeuvre and travel all day with the hybrid drive, bi-energy model. The on-board diesel-powered generator acts like a 100 amp battery charger to provide enough electrical power to operate all boom functions, even when the batteries are fully discharged.



True hybrid technology



Bi-Energy technology



Precise Positioning and Control

The self-levelling platform rotates 90° to either side on non-jib models. On jib models, the jib moves 135° to 139° vertically, depending on the model, and rotates 90° to either side. Proportional lift and drive controls allow you to determine the speed of each function and make smooth, precise movements to position yourself exactly where you need to work.

DC, Hybrid & Bi-Energy Models available

Z-34/22 DC | Z-34/22 BE | Z-45/25J DC | Z-45/25J BE | Z-60/37 DC | Z-60/37 FE

Excellent Positioning Meets Superior Handling

Genie® engine-powered articulating Z®-booms provide lifting versatility with a stunning combination of up, out and over positioning capabilities and extensive outreach. They also offer high ground clearance, two- or four-wheel drive options and rough terrain features for easy travel over irregular ground. Ideal for outdoor construction and industrial applications, these units have working heights between 12.52 m (40 ft 6 in) and 20.87 m (67 ft 11 in) and reach out a maximum of 6.78 m (22 ft 3 in) to 12.47 m (40 ft 11 in).



Performance and Terrainability

Get the job done faster and more efficiently with a powerful combination of speed and gradeability. The full-time positive drive traction system and active oscillating axle work together based on ground conditions to help keep the machine moving without losing traction on rough terrain (oscillating axle optional on some models. Not available on Z-34/22 IC).



Job Site Access

The Genie® Z®-62/40 boom lift delivers impressive horizontal reach, up-and-over reach, and zero tailswing for rough terrain performance in tight spaces. The Genie Fast Mast™ system quickly gets workers from ground to max height. It'll also cut service time with the easy access engine and hydraulics.

The Xtra Capacity™ Z®-45 XC™

The Xtra Capacity Z-45 XC boom lift is one of the few machines of its kind adapted to today's widespread need to enable people to work at height safely with increasingly heavy loads on rough terrain. This Xtra Capacity unit provides a dual load capacity of 300 kg (660 lb, unrestricted) and 454 kg (1000 lb, restricted) and weighs just 440 kg (967 lb) more than the standard Genie Z-45/25J RT model. It can be driven at full height under maximum load and features positive drive traction as well as the brand's unique full-time active oscillating axle system.



Convenient Serviceability

Genie booms are designed with service efficiency in mind. Every machine features excellent access to service points, so your service team can get in and finish tasks quickly. Swing-out engine trays and ground control panels bring components within easy reach. Related parts are located together — such as hydraulic filters or engine fuses and relays — for efficiency. Plus, many parts are common across the Genie product line, so you can stock less and save time.



Lifting Versatility

In response to customer performance demands, the Genie Z-62/40 broadens the reach of engine-powered booms. The new model adds a foot and a half of working height and four feet of horizontal outreach to its predecessor, while still delivering speedy ground-to-top lifting time with the Fast Mast™ boom system, excellent up and over clearance and minimal to zero swing in its compact stowed position. With a Stage IIIB compliant engine, it is ready to meet a multitude of jobsite needs.

Genie was the first in the industry to introduce the rotating jib.

Rough Terrain Models Available

Z-34/22 IC | Z-45/25J RT | Z-45 XC | Z-51/30J RT | Z-62/40

Ultimate Lifting Versatility

The largest of the Genie® engine-powered articulating Z®-booms. These models offer impressive working heights of 25.77 m (84 ft) on the Z-80/60 and 43.15 m (141 ft) on the ZX-135/70 and have outstanding range of motion - with features like a telescoping jib and 360° continuous turntable rotation. Powerful engine options, plus four-wheel drive and four-wheel steer take you to the work area efficiently, even over rough terrain. And the Z-boom design provides excellent up and over positioning from 8.83 m (29 ft) on the Z-80/60 to 23.01 m (75 ft 6 in) on the ZX-135/70.



Mini XChassis™ Axle Design

The XChassis expanding axle revolutionizes the mechanism for extending and retracting the axles to and from the stowed position. It combines outstanding stability with the flexibility for easy transport at a stowed machine width of just 2.49 m (8 ft 2 in) on the ZX-135/70. The Z-80/60 offers fixed-width axles for convenient transport.

Advanced Controls

The ALC 1000 electronic control system provides menu-based adjustments for machine and component calibration as well as on-screen multi-language system diagnostics.



Traction for Irregular Terrain

Four-wheel drive with full-time positive traction handles rough ground conditions to enhance the smoothness of the ride. The full time active oscillating axle on the Z-80/60 increases wheel contact on irregular terrain. Four-wheel steer comes standard on the ZX-135/70, with front wheel, rear wheel, crab and coordinated steer options available to provide additional manoeuvrability.

Powerful Engine Options

Quiet diesel engines like the turbocharged Deutz option give you more power and increased performance at higher altitudes, as well as plenty of torque for superior gradeability and terrainability. Dual fuel options are available on the Z-80/60.

Outstanding Reach and Up-and-Over Clearance

The Jib-Extend™ telescoping jib on the ZX®-135/70 model extends from 3.66 to 6.10 m (12 to 20 ft) and provides a 110° vertical range of motion to reach “up, over and in” applications inaccessible by a traditional jib. The ZX-135 has an exceptional horizontal reach of 21.26 (69 ft 9 in). The Z-80/60 can reach 18.29 m (60 ft) and has an innovative reverse-articulating secondary boom for 8.83 m (29 ft) of up and over reach with zero front arm swing.



Quick, Flexible Positioning

Both models have 360° continuous rotation turntables for fast, easy positioning. The platform also hydraulically rotates a full 160° and stays level throughout the entire range of motion. Choose dual entry 1.83 or tri-entry 2.44 m (6 or 8 ft) platforms with 227 to 272 kg (500 to 600 lbs) of capacity for operators and tools.

Genie® Fast Mast™ System

The Genie Fast Mast system allows you to lower the platform to the ground without having to lower the secondary boom — so operators can ascend and descend quickly and efficiently. In addition, this timesaving design raises both primary and secondary booms simultaneously to help the operator reach full elevation fast and increase productivity.



The Genie Jib-Extend™ telescoping jib extends from 3.66 to 6.10 m (12 to 20 ft) - providing outstanding reach and up-and-over clearance.

Rough Terrain Models Available

Z-80/60 | ZX-135/70

Outstanding Horizontal Outreach

Telescopic booms from S[®]-40 model to S-85 XC, offer greater horizontal outreach than any other type of aerial platform — perfect for areas with limited access in construction sites. They feature High Capacity and Track System options to meet the needs in specific applications and harsh working environments. Genie[®] telescopic S[®]-booms are also designed for productivity with the traction and drive speed you need to get around the job site and to the work area. These models reach out horizontally between 9.65 m (31 ft 8 in) and 27.78 m (80 ft), with working heights of 14.20 m (46 ft) to 27.91 m (91 ft).



Superior Reach and Positioning

Exceptional horizontal outreach and a rotating, self-levelling platform allow precise positioning exactly where you need to work. For added flexibility, the articulating jib boom option gives you an extra 1.52 m (5 ft) of horizontal or vertical reach and 135° of working range.



Outstanding Terrainability

A revolutionary patented system automatically senses the terrain and adjusts the axle position based on ground conditions. Positive traction drive maintains equal power to all drive wheels, even if one wheel loses traction in mud, snow or sand. And two- or four-wheel drive options make it easy to drive up loading ramps for transport.



Maximize Year-Round Productivity

Featuring a fixed, four-point track system, the Genie[®] Trax™ models allow operators to manoeuvre in a diverse range of conditions. The rubber tracks provide increased flotation and traction for travelling in mud, sand, snow, gravel, in wet or rough terrain environments, and even on sensitive outdoor surfaces. Because the Trax models are fixed with four independent tracks, they steer like a wheeled machine to allow manoeuvring close to walls and foundations. Plus, each track flexes 23° up and down for a smooth ride over undulating terrain and while loading on trailers. Machine width ranges from 2.31 m (7 ft 7 in) to 2.59 m (8 ft 6 in). Trax system available on S[®]-40, S-45, S-60, and S-65.



Great for Tight Spaces

The 360° continuous rotation turntable rotates full circle for quick and flexible positioning. Minimal tailswing allows you to manoeuvre in tight work spaces. Plus, fixed width axles eliminate the need for additional set up by an operator after unloading from a transport trailer.

Our revolutionary patented active oscillation system automatically senses the terrain and adjusts the axle position based on ground conditions.

Engine-Powered Models Available

S-40 | S-40 Trax | S-45 | S-45 Trax | S-60 | S-60 Trax | S-65 | S-65 Trax | S-80 XC | S-85 XC

Power and Terrainability

Genie® Super Booms™ lifts combine maximum reach with exceptional manoeuvrability. They feature rugged diesel engine options, four-wheel drive and four-wheel steer capabilities, and foam-filled rough terrain tyres to quickly position you where you need to work. With horizontal outreach of up to 27.43 m (90 ft) and working heights up to 56.86 m (186 ft), these machines set performance and operation standards for other booms on the market.

Great for Tight Spaces

The 360° continuous rotation turntable swings full circle for quick and flexible positioning. Reduced tailswing allows you to manoeuvre in tight workspaces.

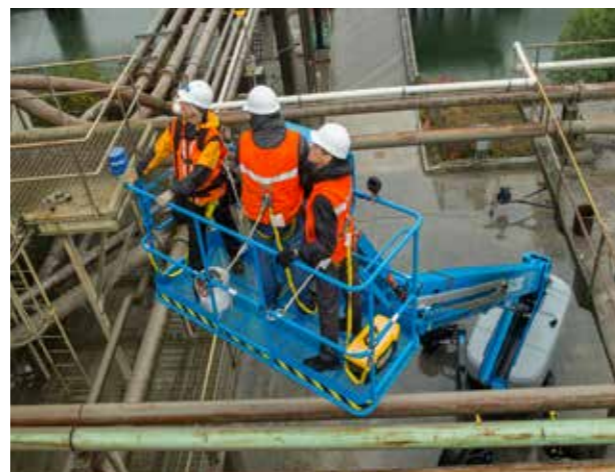
Diesel Engine Options

These models feature diesel engines for more power and increased performance, even at high altitudes. Choose from two diesel engine options on these models: Deutz 74 hp (55 kW), Perkins 83 hp (62 kW).

Xtra Capacity™ Models

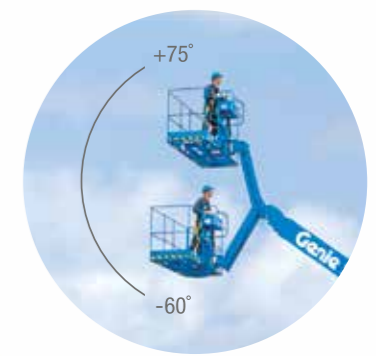
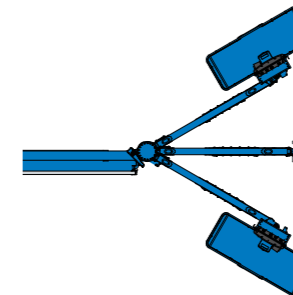
Genie XC™ (Xtra Capacity) telescopic boom lifts offer industry-leading dual lift capacity (330 kg/660 lb unrestricted and 454 kg/1000 lb restricted) and up to 3 people platform occupancy. The operator's experience is enhanced by these booms' ability to automatically retract as they reach their operating envelope, giving the XC models a smooth full range of motion throughout their entire working envelope.

With an impressive outreach of 34 m (111 ft 2 in) up to 43.15 m (141 ft) and to the ability to work 2.69 m (8 ft 10 in) to 6 m (19 ft 8 in) below grade, the Genie XC booms enable operators to work more efficiently and productively to complete higher capacity jobs in a wider range of applications than similar machines by other brands.



Precise Platform Positioning

Standard 2.44 m (8 ft) tri-entry platforms can be rotated to exactly where you need to work and are self-levelling throughout the range of motion.



Extra Working Range

The out-and-up articulating jib boom option gives you an additional 3 m (10 ft) of horizontal reach and height plus 135° of working range.

Outstanding Terrainability

All models come standard with four-wheel drive and four-wheel steer to meet the demands of rugged outdoor use. They also feature rough-terrain foam-filled tyres for excellent terrainability, traction and durability. Extendable axles allow you to extend or retract axles from the platform while driving for stability, ease of operation and convenient transport.



The horizontal outreach of the Genie Super Boom line is among the industry's best at 24.38 m to 27.43 m (80 to 90 ft), depending on the model.

Rough Terrain Models Available

S-100 HD | SX-105 XC | S-120 HD | SX-125 XC | SX-135 XC | SX-150 | SX-180

Do more with your Genie® Boom

Options and accessories packages for Genie® booms are designed to keep you and your customers a step ahead for working effectively and efficiently.

Know your Options

A variety of practical and adaptable options and accessories packages* are available to help maximize productivity while operating a Genie boom.

Accessories keep you in compliance with what is mandated on customer jobsites. Other times, it's about making the equipment you supply your customers perform at its best. Genie is your partner in making your products highly effective in a number of applications.

*Availability of accessories and options varies depending on model and/or country standards. See your Genie Sales Representative for further information.

Hostile Environment Package - cylinder bellows

Get Productive

Platforms

Choose from 1.22, 1.52, dual-entry 1.83 and tri-entry 2.44 m (4, 5, 6 and 8 ft) steel standard platforms. Add at your convenience platform control box cover, power to platform, air-line to platform and welder leads. Get reliable performance and versatile productivity with additional options and accessories:

Dual and Tri-entry Platforms*

These two platforms offer increased operators' mobility for more comfort on the worksite. The dual-entry platform is available on 1.83 (6 ft) platforms and comes with a sliding mid-rail at the front and a full swing gate at the side of the platform. The tri-entry platform is available on 2.44 m (8 ft) platforms and comes with a full swing gate at the side of the platform and a sliding mid-rail at the front and at the other side of the platform. Both come standard with eight lanyard attachment points.



Platform Mesh (full, half, screen)

Engineered to help operators keep jobsite materials and tools from falling out of platforms while working at height. Full and half platform mesh accessories are available on boom lifts fitting 1.83 and 2.44 m (6 ft and 8 ft) platforms, platform mesh screen accessory is available on telescopic boom lifts fitting 2,44 m (8 ft) platform.



Panel Cradle

For use lifting drywall, glass panes, plywood and other material that comes in panels up to 113 kg (250 lbs). The panel cradle allows operators to place materials outside of the platform for access at height. Includes the two cradles with hardware, two foam cushions, and a load retaining strap.



Light Package

For dimly lit work areas or working at night, consists of two chassis-mounted drive lights and two platform mounted work lights to illuminate the work area. Available through Genie Parts.



Aircraft Protection System

The Aircraft Protection System includes a platform foam padding and padded disable system. This option is only available on selected models and in combination with certain options. Platform capacity is adjusted to 200 kg (440 lbs).

*Standard on most Genie® booms. For more information check with your Genie sales representative.



Customize Your Boom for Specific Job Site Needs

Power Options

Power system options include AGM maintenance-free batteries, diesel Catalytic scrubber muffler, hydraulic oil cooler, engine heater, refinery kit and spark arrestor. Get reliable performance and versatile productivity with additional options and accessories:



Generator

Hydraulic-driven generator supplies power to the outlet in the platform for operating tools without relying on an outside power source or extension cord.

Cold Weather Package

To help the boom function in cold weather climates, this package includes engine heater, battery charger and hydraulic tank heater.



Hostile Environment Package

This package helps prevent loose debris from getting into important areas on the boom and chassis, prolonging the machine's life.

Basic Kit includes:

- Cylinder bellows
- Boom wiper seals
- Control box cover

Deluxe Kit includes:

- Basic Kit
- Center turntable shield
- Air intake pre-cleaner
- Cable Track protection
- Cover for vents & openings



Lift Guard™ Contact Alarm

Standard on most platforms in the Genie Z- and S-boom families and available as an aftermarket kit on older units, the Genie® Lift Guard™ Contact Alarm system features an electronic system alerting others that the operator may need help when the activation cable is disconnected.



Fall Arrest Bar*

For use on 1.83 or 2.44 m (6- or 8-ft) platforms, the Fall Arrest Bar has a sliding track, which is designed to allow the operator to be anchored with a fall arrest lanyard while providing them the ability to move freely on an adjacent structure while outside of the platform. Attaches quickly and easily for fast setup and removal.

* Jobsite and local restrictions may apply.

Prepare for Any Terrain

Genie® booms are known for versatile performance and handling rigorous workloads indoors, outdoors and on most terrain. That calls for the right tires for the job.

A wide variety of tire surfaces, sizes and fill types are available based on the work environment, climate, type of Genie boom, and job at hand.



Rough Terrain, foam-filled

Injected foam becomes solid, reducing potential of blowouts and repairs. Also aids in machine stability.



Industrial, non-marking, foam-filled

Standard on some of the small electric booms, typically used for indoor and light duty outdoor applications.



Rough Terrain, non-marking, foam-filled

Suitable for both indoor and outdoor applications.



Rough Terrain, air-filled

Standard on most RT machines.



Industrial, foam-filled

Standard on some of the small electric booms, typically used for indoor and light duty outdoor applications.



Solid Rubber, non-marking

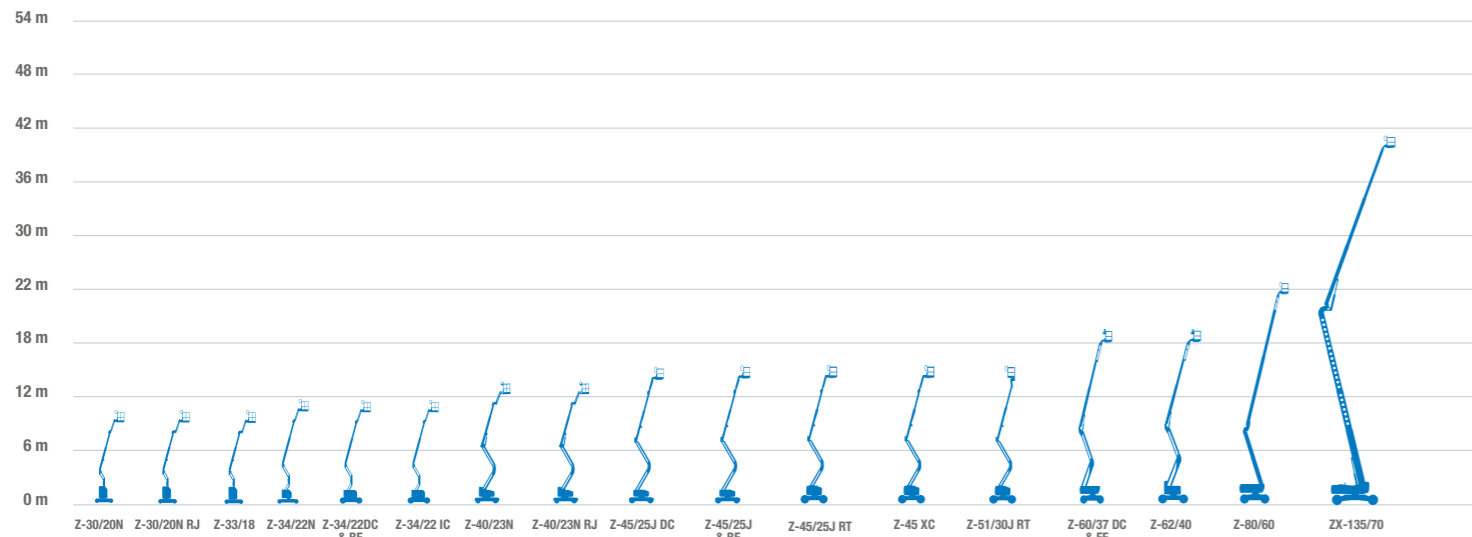
Used exclusively indoors on flat slab flooring. These hard rubber non-marking tires prevent scuffing floors or picking up debris that could otherwise damage a floor.



Specifications Articulating Z[®]-Boom Lifts

MODEL	WORKING HEIGHT		WIDTH		HORIZONTAL REACH		UP & OVER CLEARANCE		LIFT CAPACITY	
	METRIC	IMPERIAL	METRIC	IMPERIAL	METRIC	IMPERIAL	METRIC	IMPERIAL	METRIC	IMPERIAL
Narrow Articulating Z™-Boom Lifts										
Z-30/20N	11.14 m	36 ft	1.19 m	3 ft 11 in	6.53 m	21 ft 5 in	3.86 m	12 ft 8 in	227 kg	500 lbs
Z-30/20N RJ	10.89 m	35 ft 2 in	1.19 m	3 ft 11 in	6.25 m	20 ft 6 in	3.86 m	12 ft 8 in	227 kg	500 lbs
Z-33/18	12 m	39 ft 4 in	1.50 m	4 ft 11 in	5.57 m	18 ft 3 in	4.28 m	14 ft 1 in	200 kg	440 lbs
Z-34/22N	12.52 m	40 ft 6 in	1.47 m	4 ft 10 in	6.78 m	22 ft 3 in	4.62 m	15 ft 2 in	227 kg	500 lbs
Z-40/23N	14.32 m	46 ft 5 in	1.50 m	4 ft 11 in	6.91 m	22 ft 8 in	6.48 m	21 ft 3 in	227 kg	500 lbs
Z-40/23N RJ	14.32 m	46 ft 5 in	1.50 m	4 ft 11 in	6.91 m	22 ft 8 in	6.48 m	21 ft 3 in	227 kg	500 lbs
DC, Hybrid And Bi-Energy Articulating Z™-Boom Lifts										
Z-34/22 DC	12.52 m	40 ft 6 in	1.73 m	5 ft 8 in	6.78 m	22 ft 3 in	4.57 m	15 ft	227 kg	500 lbs
Z-34/22 BI-ENERGY	12.52 m	40 ft 6 in	1.73 m	5 ft 8 in	6.78 m	22 ft 3 in	4.57 m	15 ft	227 kg	500 lbs
Z-45/25J DC	15.94 m	51 ft 9 in	1.79 m	5 ft 10.3 in	7.65 m	25 ft 1 in	7.24 m	23 ft 9 in	227 kg	500 lbs
Z-45/25J BI-ENERGY	15.94 m	51 ft 9 in	1.79 m	5 ft 10.3 in	7.65 m	25 ft 1 in	7.24 m	23 ft 9 in	227 kg	500 lbs
Z-60/37 DC	20.16 m	65 ft 7 in	2.49 m	8 ft 2 in	11.15 m	36 ft 7 in	7.39 m	24 ft 3 in	227 kg	500 lbs
Z-60/37 FE	20.16 m	65 ft 7 in	2.49 m	8 ft 2 in	11.15 m	36 ft 7 in	7.39 m	24 ft 3 in	227 kg	500 lbs
Engine-Powered Articulating Z™-Boom Lifts										
Z-34/22 IC (2 WD)	12.52 m	40 ft 6 in	1.73 m	5 ft 8 in	6.78 m	22 ft 3 in	4.57 m	15 ft	227 kg	500 lbs
Z-34/22 IC (4 WD)	12.62 m	40 ft 10 in	1.85 m	6 ft 1 in	6.78 m	22 ft 3 in	4.6 m	15 ft 1 in	227 kg	500 lbs
Z-45/25J RT	16.05 m	52 ft 1 in	2.29 m	7 ft 6 in	7.52 m	24 ft 8 in	7.14 m	23 ft 5 in	227 kg	500 lbs
Z-45 XC	15.87 m	51 ft 6 in	2.29 m	7 ft 6 in	7.55 m	24 ft 9 in	7.30 m	23 ft 11 in	300/454 kg	661/1000 lbs
Z-51/30J RT	17.59 m	57 ft 8 in	2.29 m	7 ft 6 in	9.37 m	30 ft 9 in	7.39 m	24 ft 3 in	227 kg	500 lbs
Z-62/40	20.87 m	67 ft 11 in	2.49 m	8 ft 2 in	12.42 m	40 ft 5 in	7.8 m	26 ft 8 in	227 kg	500 lbs
Z-80/60	25.77 m	84 ft	2.49 m	8 ft 2 in	18.29 m	60 ft	8.83 m	29 ft	227 kg	500 lbs
ZX-135/70	43.15 m	141 ft	2.49 m*	8 ft 2 in*	21.26 m	69 ft 9 in	23.01 m	75 ft 6 in	272 kg	600 lbs

*Axles retracted

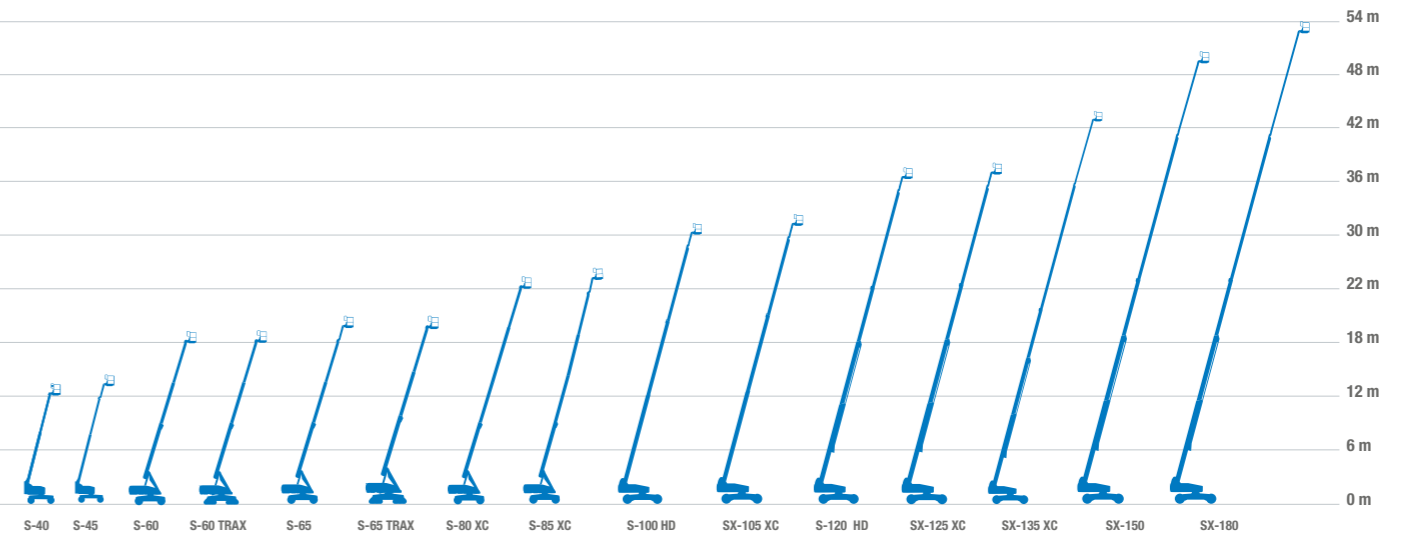


Specifications Telescopic S[®]-Boom Lifts

MODEL	WORKING HEIGHT		WIDTH		HORIZONTAL REACH		LIFT CAPACITY	
	METRIC	IMPERIAL	METRIC	IMPERIAL	METRIC	IMPERIAL	METRIC	IMPERIAL
Stick Telescopic S™-Boom Lifts								
S-40	14.20 m	46 ft	2.30 m	7 ft 6 in	9.65 m	31 ft 8 in	227 kg	500 lbs
S-40 TRAX	14.20 m	46 ft	2.31 m	7 ft 7 in	9.65 m	31 ft 8 in	227 kg	500 lbs
S-45	15.72 m	51 ft	2.24 m	7 ft 4 in	11.18 m	36 ft 8 in	227 kg	500 lbs
S-45 TRAX	15.72 m	51 ft	2.31 m	7 ft 7 in	11.18 m	36 ft 8 in	227 kg	500 lbs
S-60	20.30 m	66 ft	2.49 m	8 ft 2 in	15.48 m	50 ft 10 in	227 kg	500 lbs
S-60 TRAX	20.30 m	66 ft	2.59 m	8 ft 6 in	15.48 m	50 ft 10 in	227 kg	500 lbs
S-65	21.80 m	71 ft	2.49 m	8 ft 2 in	17.10 m	56 ft 2 in	227 kg	500 lbs
S-65 TRAX	21.80 m	71 ft	2.59 m	8 ft 6 in	17.10 m	56 ft 2 in	227 kg	500 lbs
S-80 XC	26.38 m	86 ft	2.49 m	8 ft 2 in	20.83 m	68 ft 4 in	300/454 kg**	660/1000 lbs
S-85 XC	27.91 m	91 ft	2.49 m	8 ft 2 in	22.71 m	74 ft 6 in	300/454 kg**	660/1000 lbs
Heavy Duty Telescopic S™-Boom Lifts								
S-100 HD	32.48 m	106 ft	2.49 m*	8 ft 2 in*	22.26 m	73 ft	340 kg	1,250 lbs
S-120 HD	38.58 m	126 ft	2.49 m*	8 ft 2 in*	22.26 m	73 ft	340 kg	1,250 lbs
Super Telescopic S™-Boom Lifts								
SX-105 XC	34.00 m	111 ft	2.49 m*	8 ft 2 in*	24.38 m	80 ft	300/454 kg**	660/1000 lbs
SX-125 XC	40.10 m	131 ft	2.49 m*	8 ft 2 in*	24.38 m	80 ft	300/454 kg**	660/1000 lbs
SX-135 XC	43.15 m	141 ft	2.49 m*	8 ft 2 in*	27.43 m	90 ft	300/454 kg**	660/1000 lbs
SX-150	48.02 m	157 ft	2.49 m*	8 ft 2 in*	24.38 m	80 ft	340 kg	750 lbs
SX-180	56.86 m	186 ft	2.49 m*	8 ft 2 in*	24.38 m	80 ft	340 kg	750 lbs

* Axles retracted

** Maximum outreach zone / maximum capacity zone





Corporate Headquarters: United States

18340 NE 76th Street, P.O. Box 97030, Redmond, Washington 98073-9730

Telephone **+1 (425) 881-1800** · Fax +1 (425) 883-3475

www.genielift.com

Europe, Middle East, Africa and Russia

To view all our locations visit www.genielift.co.uk/locations

Telephone **(+44) 800 988 3739** (Toll Free for UK/Ireland) · Fax +31 165 511 148 · Email: AWP-InfoEurope@terex.com

www.genielift.co.uk

Worldwide Manufacturing And Distribution

Australia · Brazil · Caribbean · Central America · China · France · Germany · Italy · Japan · Korea · Mexico

Russia · Southeast Asia · Spain · Sweden · United Arab Emirates · United Kingdom · United States

Effective Date: February 2018. Product specifications and prices are subject to change without notice or obligation. The photographs and/or drawings in this document are for illustrative purposes only. Refer to the appropriate Operator's Manual for instructions on the proper use of this equipment. Failure to follow the appropriate Operator's Manual when using our equipment or to otherwise act irresponsibly may result in serious injury or death. The only warranty applicable to our equipment is the standard written warranty applicable to the particular product and sale and we make no other warranty, express or implied. Products and services listed may be trademarks, service marks or trade names of Terex Corporation and/or their subsidiaries in the USA and many other countries. Genie and Taking You Higher are trademarks of Terex Corporation or its subsidiaries. © 2018 Terex Aerial Work Platforms. Part No. 109301UK.

